

Deciphering the artist's mind

Studio Bas Jan Ader

De Kwetsbaarheidsparadox, 2016.



Tyfec stitched, two-sided, 90 x169 cm.

Collection Rijksmuseum Twente, Enschede.

Deciphering the artist's mind

Studio Birthe Leemeijer
Mapping the Smell, 2017-2018

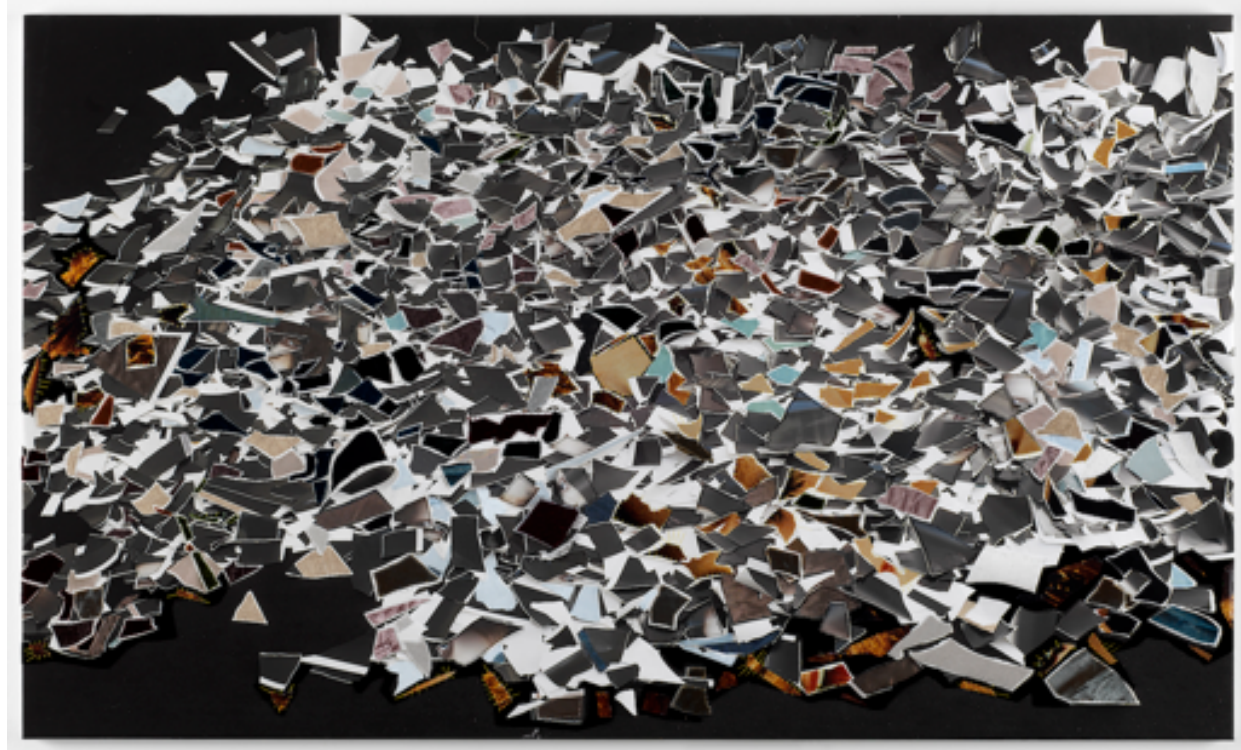
Tyfec stitched, two-sided, 90 x 90 cm.
Private Collection Heemstede.



Deciphering the artist's mind

Studio Desiree Dolron:

The Blind Pixels, 2014



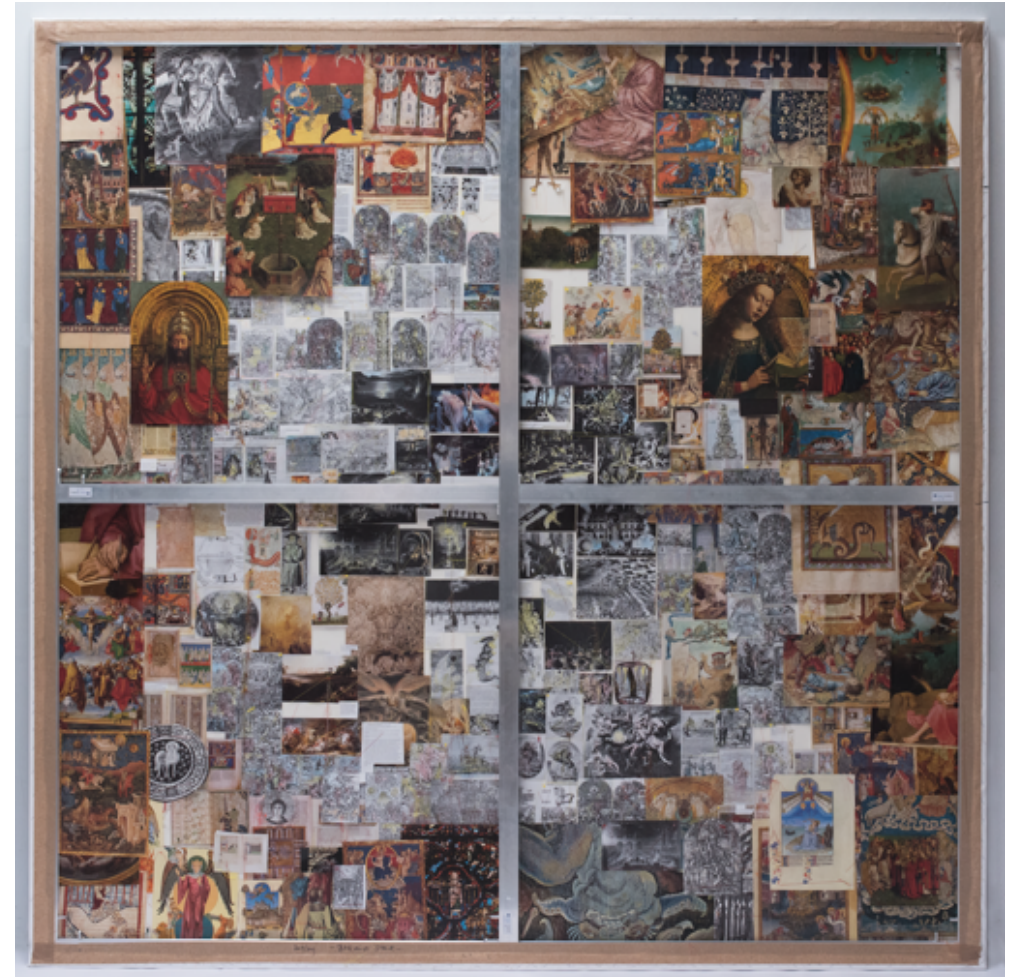
Tyfec stitched, two-sided, 75 x 125 cm.

Private Collection Amsterdam.

Deciphering the artist's mind

Studio Berend Strik
The Apocalyps, 2018

Tyfec stitched, two-sided, 220 x 220 cm.
Courtesy Berend Strik, Galerie Fons Welters, Amsterdam



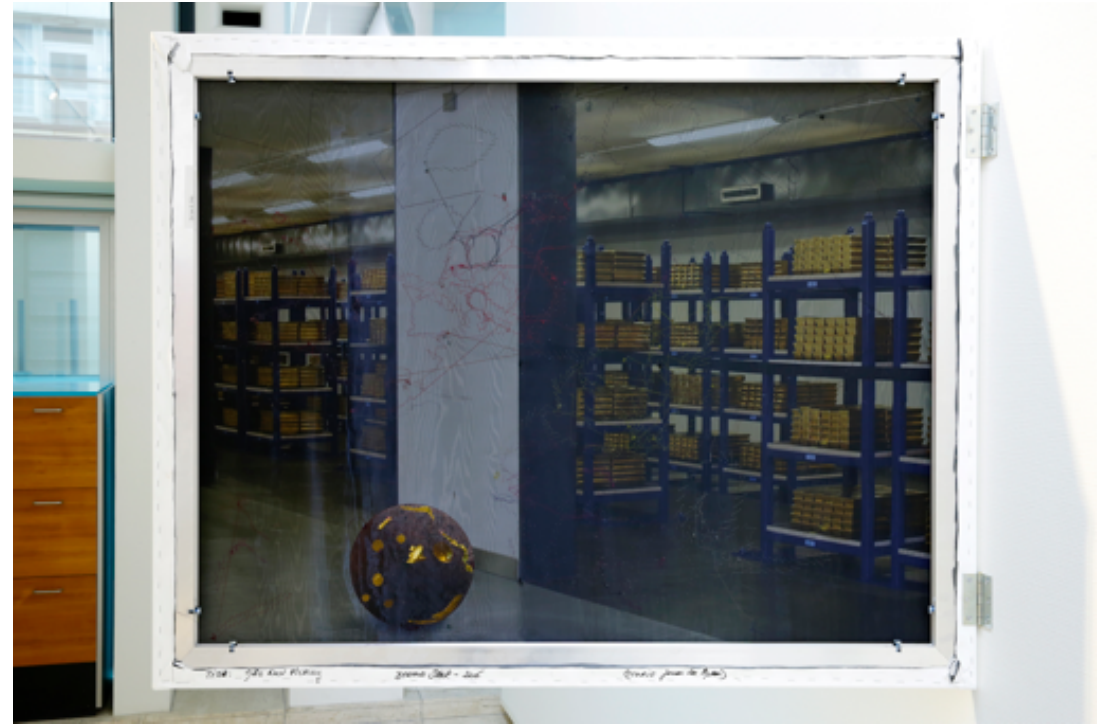
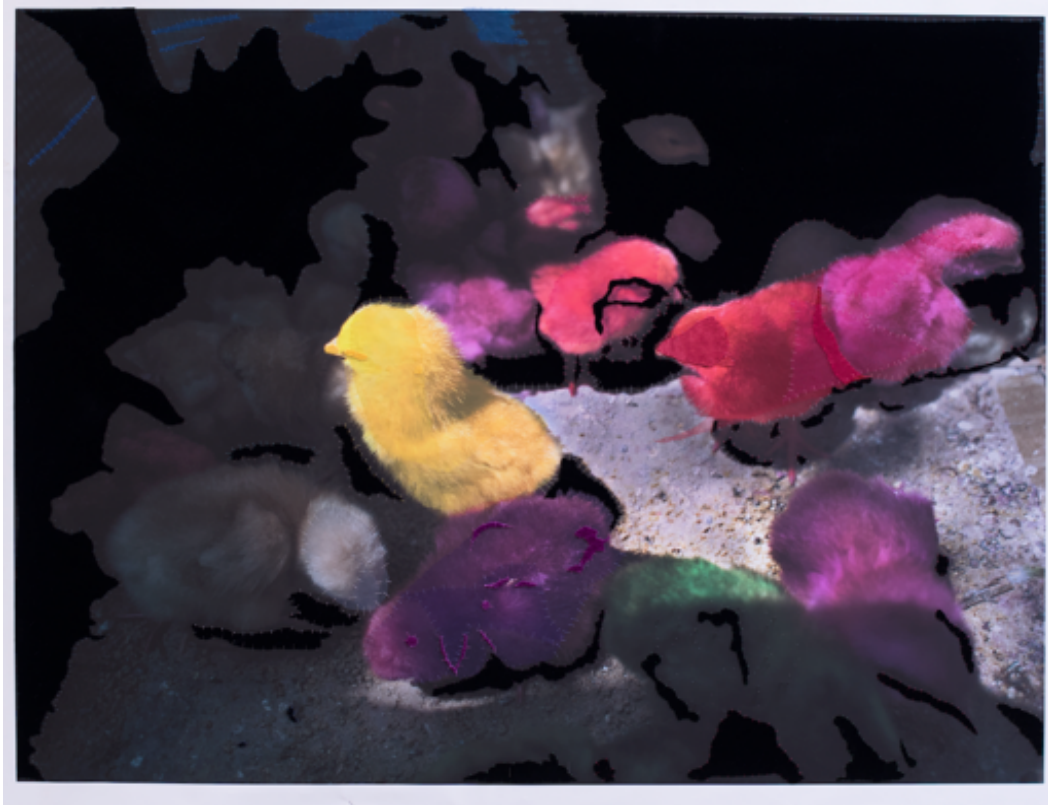
Deciphering the artist's mind
Studio Ger van Elk
California Dreaming, 2016, Studio Visit 1997-15



Tyfec stitched, two-sided, 90 x 110 cm.
Collection AMC, Amsterdam.

Deciphering the artist's mind

Studio James Lee Byars
Fluttering Red, 2016



Tyfec stitched, two-sided, 90 x 110 cm.
Courtesy De Nederlandse Bank Amsterdam

Deciphering the artist's mind
Studio Jason Moran So You So Me, 2017

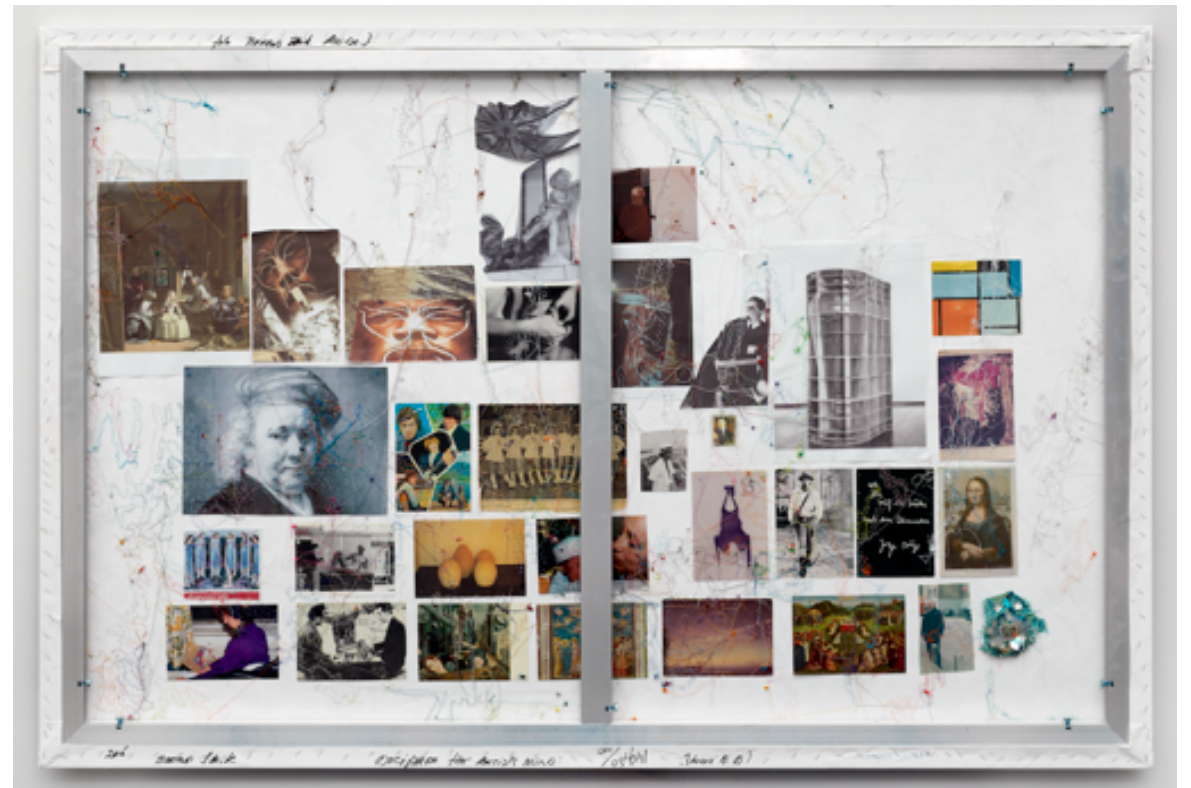
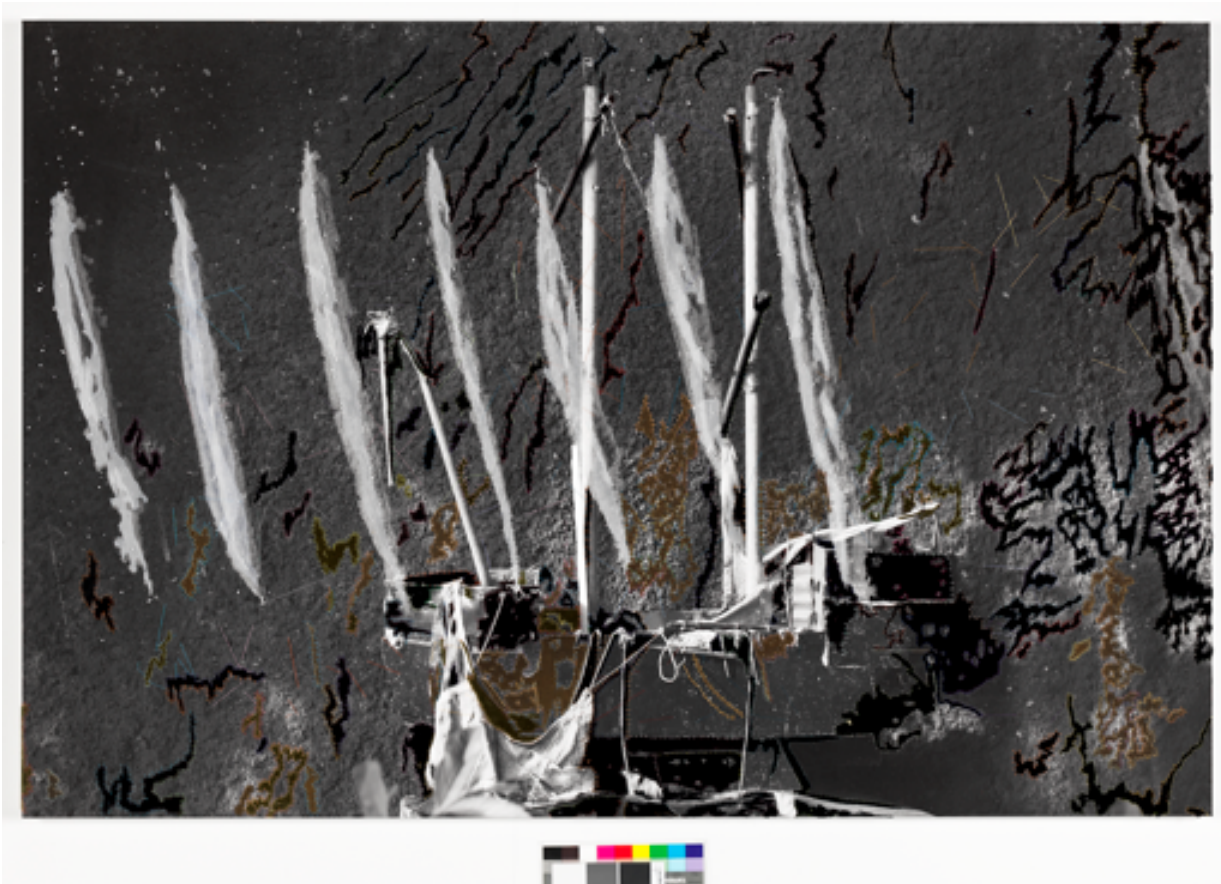
Tyfec stitched, two-sided, 145 x 220 cm. Private Collection, Amsterdam



Deciphering the artist's mind

Studio Neville D'Almeida:
Maestro del Giallo, 2016

Tyfec stitched, two-sided, 100 x 142 cm.
Private Collection Amsterdam



Deciphering The Artist's Mind, Roaming Maps I, II . 2014-2018
Tyfec stitched, I- 220 cm x 220 cm. II- 240 cm x 240 cm
Courtesy Berend Strik and Private Collection.



Deciphering the artist's mind

Studio David Hammons
Fuck You Art World II , 2016

Tyfec stitched, two-sided, 80,5 x 120cm.
Courtesy Berend Strik , Galerie Fons Welters , Amsterdam.

